



PATHFINDER ECDIS

TYPE APPROVED ELECTRONIC CHART DISPLAY AND INFORMATION SYSTEM

Key Benefits

Robust and Future Proof

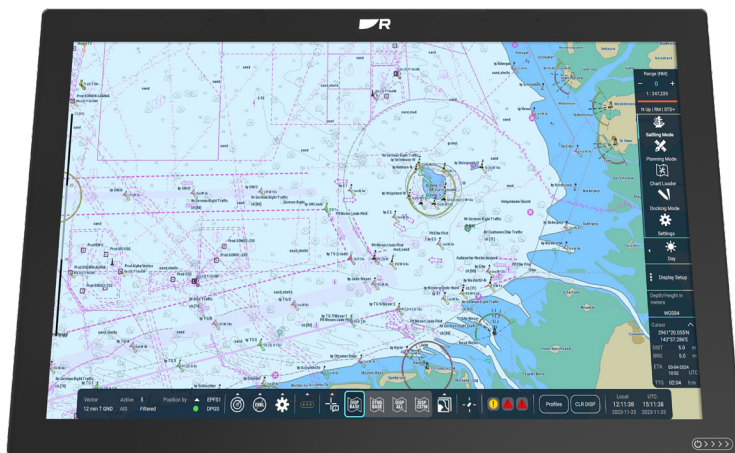
Pathfinder is an embedded fan-less navigation system engineered for reliability and simple upgrades, future S-100 chart support, ensuring your investment is protected for years to come.

ECDIS Made Simple

Pathfinder simplifies chart installation, route planning, and voyage execution, eliminating the need for lengthy and complex crew training.

Connected and Secure

Unlike vulnerable desktop-based systems, Pathfinder is secure by design. Pair Pathfinder with our eSync gateway and ENC's and ECDIS data are always up-to-date.



Other Benefits

- Subjected to rigorous environmental testing, significantly increasing the lifespan of the system
- Proven hardware and a fan-less display design ensure superior longevity and reduced maintenance
- Built-in processor and integrated 3-port network switch, reduces space required for both new and retrofit solutions
- Seamless integration with Pathfinder Radar via a single ethernet connection
- HDMI video output for legacy VDR interfacing or repeater screens
- Surface, flush, recessed or deck-stand mounting options

Pathfinder ECDIS Specifications

PATHFINDER ECDIS	
PATHFINDER DISPLAY	
Screen Size	24"
Resolution	1920 x 1200 WUXGA
Illumination	1300 nits
Viewing Distance (m)	0.9
Weight	11.8 /24.9 lbs
Waterproof Rating	IPx6, IPx7
Operating Temp Range	-25°C to +55°C (-13°F to 131°F)
Humidity	Up to 93% at 40°C (104°F)
PATHFINDER DCU	
Waterproof Rating	IP40
Operating Temperature Range	-25°C to +70°C (-13°F to 158°F)
Humidity	Up to 95% at 55°C (131°F)
POWER	
Display	12/24 DC or 110/230v via AC Power Kit
DCU	12/24 DC or 110/230v via AC Power Kit

INTERFACING	
PATHFINDER DISPLAY PROCESSOR	
Ethernet Ports	3 PoE RayNet (10/100/1,000 Mbps/s)
IEC-61162-450 Enabled	Yes
Buzzer Output	2 Bare-ended wires (via an accessory cable)
PATHFINDER DCU	
Serial Port Inputs	8 Configurable Opto-isolated
Serial Port Outputs	6 Configurable ISO-Drive™ isolated
Alarm Output	1 Alarm output relay (N/O and N/C contacts) Activated on System Fail or Specific Alert ID
LAN	10/100BaseT, automatic polarity detection
DATA SENTENCES	
NMEA 0183 Input	ACN, DBT, DPT, DTM,GGA, GLL, HBT, HDT,MWV, RMC, ROT, RRT, SRP, THS, TLB, TTD, TTM, VBW, VDM, VDO, VHW, VSD, VTG, ZDA
DATA SENTENCES	
NMEA 0183Output	ALC, ALF, ARC, EVE, HBT, RRT, SRP

	DIMENSIONS	
	mm	in
A	578	22.76
B	387	15.23
C	9.0	0.35
D	76	3.0

