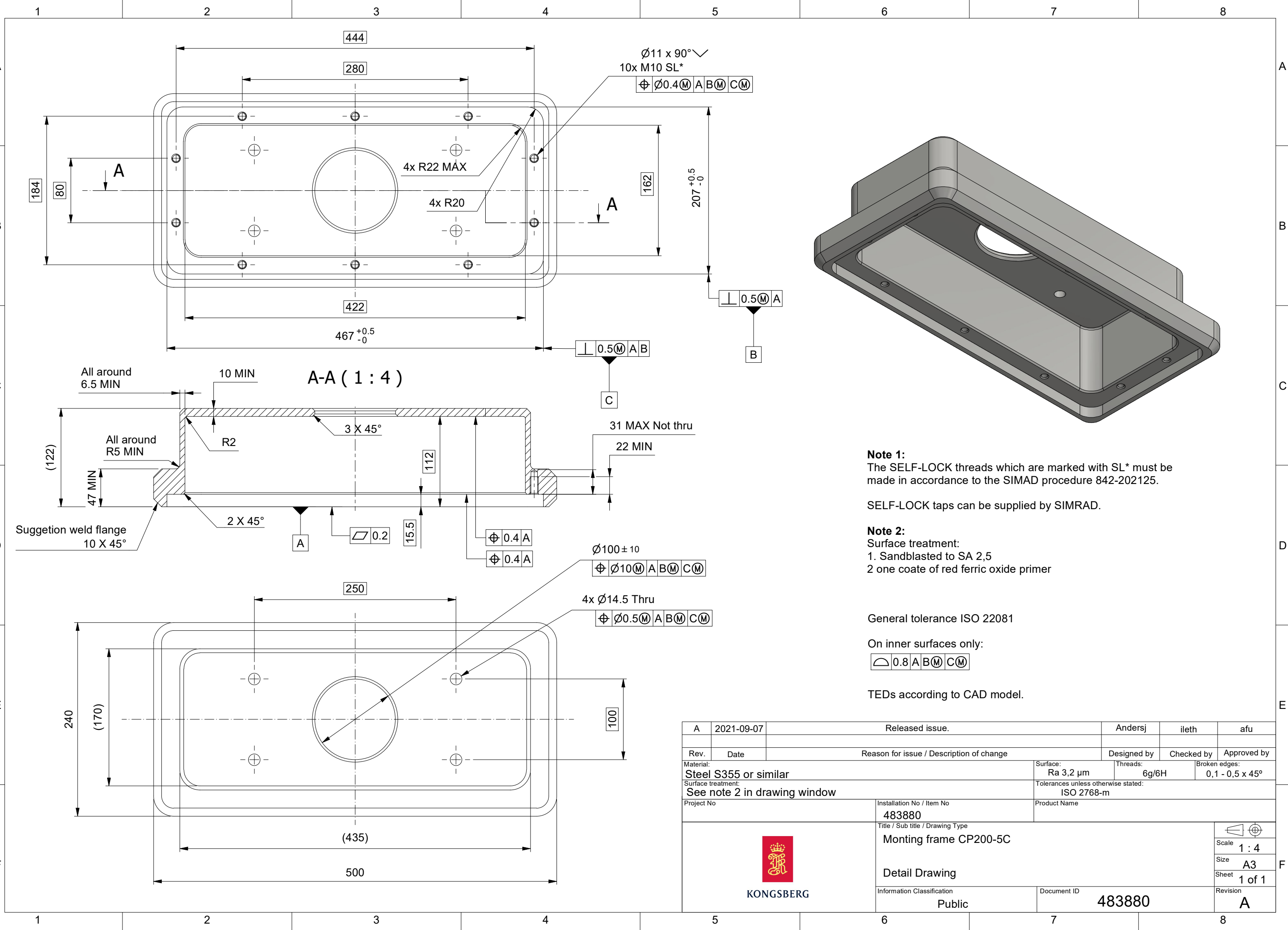


The reproduction, distribution and utilization of this document as well as the communication of its contents to others without express authorization is prohibited. Offenders will be held liable for the payment of damages. All rights reserved in the event of grant of a patent, utility model or design. © Kongsberg Maritime



Note 1:
The SELF-LOCK threads which are marked with SL* must be made in accordance to the SIMRAD procedure 842-202125.

SELF-LOCK taps can be supplied by SIMRAD.


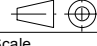
Note 2:
Surface treatment:
1. Sandblasted to SA 2,5
2. one coat of red ferric oxide primer

General tolerance ISO 22081

On inner surfaces only:

$\sqrt{0.8}$ A B (M) C (M)

TEDs according to CAD model.

| | | | | | |
|--|------------|--|---|-------------------|--|
| A | 2021-09-07 | Released issue. | Andersj | ileth | afu |
| Rev. | Date | Reason for issue / Description of change | Designed by | Checked by | Approved by |
| Material: Steel S355 or similar | | | Surface: Ra 3,2 µm | Threads: 6g/6H | Broken edges: 0,1 - 0,5 x 45° |
| Surface treatment: See note 2 in drawing window | | | Tolerances unless otherwise stated: ISO 2768-m | | |
| Project No | | Installation No / Item No 483880 | Product Name | | |
|  KONGSBERG | | Title / Sub title / Drawing Type Monting frame CP200-5C | | |  Scale 1 : 4 |
| | | Detail Drawing | | | Size A3 |
| Information Classification Public | | Document ID 483880 | Sheet 1 of 1 | | Revision A |