

## Turning the system ON and OFF

Press the Power key/button:

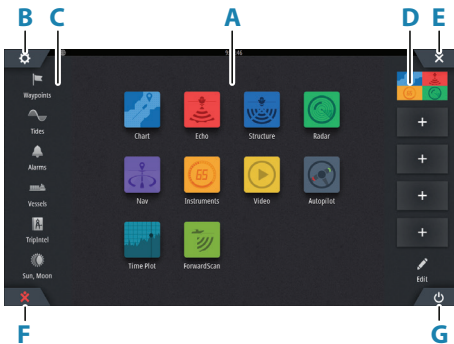
- on the front of the Main Processor Unit
- on the front of the monitor (depending on type of monitor and configuration)
- on the remote controller
- on the Home page or System Controls dialog (turning off only)

## How to operate the system

Using the touchscreen: multi-touch gestures for object selection and menu access.  
Requires a touchscreen monitor in the system.

Using external controller: keyboard, mouse, trackball or remote controller.

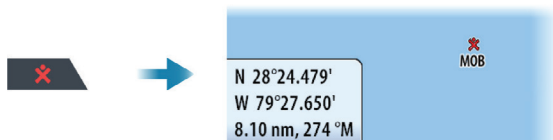
## Home page



- A** Application buttons
- B** Settings button
- C** Tools
- D** Favorites
- E** Close button
- F** Man Over Board (MOB) button
- G** Power button

## The MOB mark

To create a MOB mark: press the MOB button.



To stop displaying navigational information to the MOB waypoint: cancel the navigation from the menu.

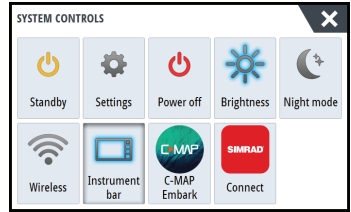
# System Controls dialog

Used for quick access to system settings.

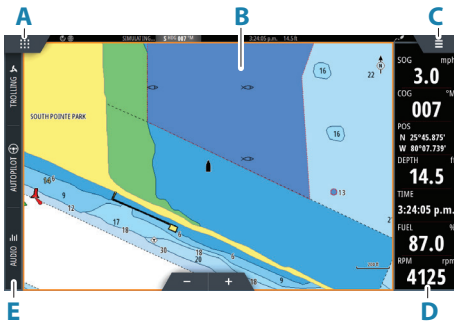
Activate the dialog by:

- Pressing the Power key
- Swiping from the top of the screen

→ **Note:** The content of the System Controls dialog depends on connected equipment and active panel.



# Application pages

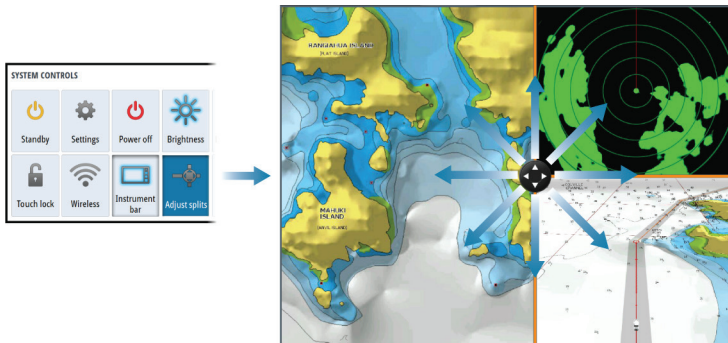


- A Home/pages button
- B Application panel
- C Menu button
- D Instrument bar
- E Control bar

# Adjust panel size

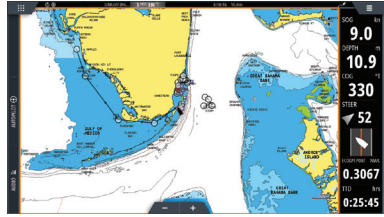
You can adjust the panel sizes in a split page.

1. Tap the adjust split button in the System Controls dialog to show the resize icon
2. Drag the resize icon to set preferred panel size
3. Save the changes by tapping the screen



## Charts

- Zoom the chart by using spread or pinch gestures or by using the zoom buttons.
- Move the view in any direction by panning the chart.
- Display information about a chart item by tapping the item.



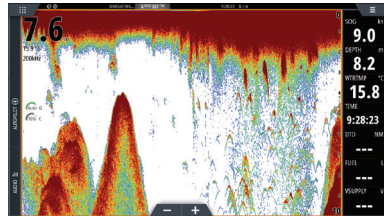
## Waypoints

To create a waypoint: select the new waypoint option in the menu.

- **Note:** With cursor inactive, the waypoint is placed at vessel's position. With cursor active, the waypoint is placed at selected cursor position.

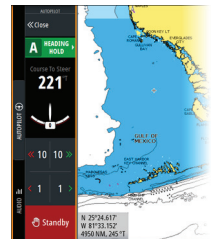
## Echosounder

- Zoom the image by using the zoom buttons.
- View echosounder history by panning the image.
- Adjust gain and color using the slide bar in the menu.
- Toggle auto gain ON/OFF from the menu.



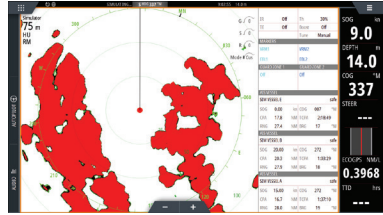
## Autopilot

- Activate the autopilot controller from the Control bar.
- Select an autopilot mode by pressing the mode button from the Control bar.
- Switch to standby mode from the autopilot controller or by using physical Standby key.



## Radar

- Turn the radar transmitting ON/OFF from the menu.
- Adjust radar range by using the zoom buttons on the radar panel.



## Product manuals

For the full Operator and Installation manuals, technical specifications and declarations, refer to the product website on: [www.simrad-yachting.com](http://www.simrad-yachting.com)